

# BEM Toolbox3 version 3.22.7 Release and Installation Notes.

Document version: 09 June 2022.



This Toolbox update:

- Supersedes all previous versions of the Toolbox.
- Is compatible with BEM 10 and BEM 11 streams.
- Is applicable for all Associations.
- To enable all facilities in this update requires BEM version 11.22.3 or later.
- For Australian users to have compliance with the 2022 AusCycling regulations, minimum program versions required are Toolbox 3.22.1 and BEM 10.22.0 or 11.22.0.

## Contents.

Changes from Toolbox3 version 3.22.6 to 3.22.7 09-June-22.....	2
Changes from Toolbox3 version 3.22.5 to 3.22.6 31-May-22.....	2
Changes from Toolbox3 version 3.22.4 to 3.22.5 11-Mar-22 .....	3
Changes from Toolbox3 version 3.22.1 to 3.22.4 09-Mar-22 .....	3
Changes from Toolbox3 version 3.22.0 to 3.22.1 02-Nov-21 .....	3
Changes from Toolbox3 version 3.21.11 to 3.22.0 22-Oct-21 .....	3
Changes from Toolbox3 version 3.21.10 to 3.21.11 15-May-21.....	3
Changes from Toolbox3 version 3.21.9 to 3.21.10 23-Apr-21 .....	4
Changes from Toolbox3 version 3.21.8 to 3.21.9 25-Mar-21 .....	4
Changes from Toolbox3 version 3.21.5 to 3.21.8 19-Feb-21 .....	4
Changes from Toolbox3 version 3.21.2 to 3.21.5 24-Jan-21.....	4
Changes from Toolbox3 version 3.21.0 to 3.21.2 20-Dec-20 .....	5
Changes from Toolbox3 version 3.10.3 to 3.21.0 24-Nov-20.....	5
Installation of Toolbox Version 3.22.7.....	7
Environment Details .....	11

## Changes from Toolbox3 version 3.22.6 to 3.22.7

09-June-22

- The Toolbox 3.22.7 update supports the new Class Code of PT-PART introduced in BEM 11.22.3.  
The new class code provides facilities for a Pump Track Participation (non-scored) category where all riders in the category run in all Qualification rounds and all have an additional run in the Finals round.

Configure Classes

Class Number: 14

Class Long Name: 7 Sprockets

Class Type: 1 (Enter 1 - 5. E.g. 1=20", 2=24", 3=MTB, 4=other, 5=20" AusCycling Advanced Rider)

Class Short Name: 7yo

Minimum Entries: 5

Entry Fee 1: 0.00

Fee Code 1: [ ]

UCI Event Code: [ ] (For Championship Classes at UCI Ranking Events, enter the UCI assigned Event Code.)

Entry Fee 2: 0.00

Fee Code 2: [ ]

**Class Code: PT-PART** (Modified Pump Track rules for Participation (non-scored) categories. All riders do the Qualification round(s) and all having an additional single run in the finals round.)

Score Code: PART (Participation Class. No Scoring. Finals Code ignored.)

Finals Code: NUL (No Finals)

Class Sponsor: Moto-Sheets.com

## Changes from Toolbox3 version 3.22.5 to 3.22.6

31-May-22

- The Toolbox 3.22.6 update supports the new CompetitionID field added to Json reports in BEM 11.22.2 for the scoreboard API interface  
The CompetitionID field can be edited when creating new events or editing existing events via the Event Details user form.

Event Details

Event Name: [ ]

Event Location: [ ]

Competition ID (for JSON API): [ ]

Event Sponsor: [ ]

Event or Sponsor related website to appear on reports: [ ]

Actual web page link: E.g. www.something.com

Link Text: E.g. Actual link or Click here for web page

Date for Licence Expiry Check: 2 Aug 2021

Date for Age Determination: 31 Dec 2021

Motos before Final: 3

Number of Starting Lanes: 8

AusCycling Class of Event & Location: None

UCI Competition Code: [ ] (For UCI Ranking Events, enter the UCI assigned Competition Code)

Print Paper Size: A4 (210 mm x 297 mm)

Valid Licence Types: 0,5 (Licence types separated by comma(s). E.g., 0,5 Leave blank for no checking.)

Minimum Riders for B (Consolation) Final: 11 (Minimum in class for B (consolation) final for Class\_Code of EXPTCONS and EXPTCONS-F or Finals\_Code A-B)

Minimum Riders for One Gate Final: 4 (Minimum in class for Final for Class Codes allowing for a Final with a single gate (heat). E.g. UCI-F, EXPT-F. Enter 3 to number of starting lanes)

Number of Time Trials: 1

Minimum Riders for Time Trial Super Final: 12 (Minimum in class for Time Trial Super Final for UCI "SF" Class\_Codes. Set to 12 for UCI Rules. Values 5-12 accepted.)

Class Code [B-W and B-W-F]

Minimum Riders for Invitation Finals: 9

C Final: 9

Minimum Riders for C Final: 99

Number of Finals: [ ]

Maximum Number of Finals: [ ]

Event Mode:  BMX / Pump Track / etc.  MTB Enduro (Gravity Enduro)

## **Changes from Toolbox3 version 3.22.4 to 3.22.5**

11-Mar-22

- This is an important maintenance release correcting a fault inadvertently introduced with version 3.22.4 that occurs when creating a new event file using a reference event.

## **Changes from Toolbox3 version 3.22.1 to 3.22.4**

09-Mar-22

- Updated the import for Red Bull on-line entries for their new 2022 entry format.
- Added new Class Code MTB-XCE and Score Code XCE to support the Mountain Bike Cross Country Eliminator race format added to BEM series 11.
- Added new Class Codes of PT-OS-32 and PAT-OS-16 to support the Pump Track Open Session changes added to BEM series 11.

## **Changes from Toolbox3 version 3.22.0 to 3.22.1**

02-Nov-21

- Correction to the Event Details screen when creating a new event or editing an existing event, the Event Mode may not show either the “BMX / Pump Track / 4x” or “MTB Enduro” options selected.
- Update for compliance with the 2022 AusCycling BMX rule changes associated with Event Sanctioning levels.

## **Changes from Toolbox3 version 3.21.11 to 3.22.0**

22-Oct-21

- Updated World Cup Class Code description for the UCI 2022 rule changes.
- Added note to Enduro and Pump Track Class Code descriptions that to run these events require BEM version 11.
- Updated event template when creating new events adding requirements to cater for MTB Enduro / Gravity Enduro competitions provided in the BEM version 11 stream.
- Updated the rider list database in preparation for the introduction the AusCycling Advanced Rider classification.
- Updated the processing for the moving target that is Red Bull Pump Track race entry format.
- Correction to a fault with operator selections when checking UCI IDs in an event file against the UCI database.

## **Changes from Toolbox3 version 3.21.10 to 3.21.11**

15-May-21

- Updates the processing for Red Bull online entries to match their revised Xivado entry export format.
- Corrects a fault when processing online entries when the “always substitute” option was selected for a non-matching Club where the first processed entry for the substitute was not updated.
- For Australia, removed the OSM online entry option and added Red Bull online entries as a source type selection.

## Changes from Toolbox3 version 3.21.9 to 3.21.10

23-Apr-21

The update to 3.21.10 corrects a reporting error that can occur when processing on-line entries and the Club in the on-line entries doesn't match any Club in the event.

## Changes from Toolbox3 version 3.21.8 to 3.21.9

25-Mar-21

The update to 3.21.9 corrects two long standing but only recently discovered issues:

- When creating a new .bem event file and the reference event is set for 2 Time Trial runs, the new event will be incorrectly set for 1 Time Trial run.
- When creating a new .bem event file without using a reference event, an error can occur when adding the first new Club to the template.

## Changes from Toolbox3 version 3.21.5 to 3.21.8

19-Feb-21

- For Australian users:
  - Conformance with the heading format change made by AusCycling to their TidyHQ Club Membership export.  
As such Toolbox version 3.21.8 becomes the minimum requirement to import AusCycling memberships details from TidyHQ into a BEM Rider List using the procedure in the AusCycling document "BMX Clubs using BEM"
  - Update when refreshing an OSM based BEM Rider List with a TidyHQ export so that:
    - The membership number is always updated from the BMXA number to the AusCycling number irrespective of the expiry date.
    - Improved management of multiple records with the same membership number in the TidyHQ export.

## Changes from Toolbox3 version 3.21.2 to 3.21.5

24-Jan-21

- When adding entries to a .bem event from an on-line entry system export, adds a new operator prompt when a rider's Club in the on-line entry does not exist in the event file.

For this scenario the operator can choose to ignore, select another club that does exist in the event or add the missing club to the event.

The following changes are applicable when Australia selected as the Association.

- Allows an EntryBoss online entry file to be used to refresh an existing Rider List file. I.e. update an OSM Rider List for members who have renewed with their new AusCycling membership number, renewal date and membership level.
- Adds missing BMXA "International Rider" and the EntryBoss generic "Race" membership levels to the event eligibility checking against the event sanctioning level.
- Corrects the operator warning when an AusCycling membership level is not valid for the event as previously the wrong rider details could be shown.

- Corrects a processing error that can occur when checking transponder subscriptions when copying entries to a .bem event file.
- Corrects a processing error when checking UCI IDs when copying EntryBoss entries to a .bem event file.

## Changes from Toolbox3 version 3.21.0 to 3.21.2

20-Dec-20

Note that all changes in this upgrade are applicable with Australia selected as the Association.

- Adds a new feature to enable import of online entries for AusCycling events using the EntryBoss system to either a BEM Event or Rider List file.
- Adds a new feature enabling import of Club level membership exports from the AusCycling TidyHQ database to create a new or refresh an existing BEM Rider List file.

This facility will allow Clubs to update their existing OSM based Rider List for their members who have renewed with AusCycling.

- Added additional transponder number format checking and auto correcting as a work around to offset the lack of any transponder number formatting rules in AusCycling's TidyHQ membership database.

E.g. In this example the transponder has the unwanted "(20 Inch) removed"

Note that you can edit the transponder number if required

Where the auto-correction is not possible, the operator can enter the valid transponder number in the green box then click the corresponding "Use This" button.

- Expands on the Membership Level checking to include legacy Cycling Australia, BMXA and MTBA memberships.

## Changes from Toolbox3 version 3.10.3 to 3.21.0

24-Nov-20

Note that Pump Track facilities require BEM 3.11.x versions for which an upgrade fee is applicable.

- For Australian users
  - The Rider List file will be encrypted to comply with AusCycling security requirements.
  - Membership type applicability to enter and event is now managed by selecting the relevant AusCycling Class of event (sanctioning) level in the Event Details form.
  - Menu selections have been provided in anticipation of processing AusCycling membership database and AusCycling event exports

however those export types are not available from AusCycling as of November 2020.

- Updated the event template to version 47 to support new features allowing operators to add an Event Location and Event or Sponsor web link to be shown in html and selected print reports.

- A new facility is added to check and update rider's UCI IDs in either on-line entry files or a BEM event file via API access to the UCI database. Note that this check can also be performed when copying on-line entries into an event file.

- Added a new source type to process Red Bull Pump Track on-line entries.
- When refreshing an existing Rider List, individual details of new entries and renewed memberships are logged in the exception file.
- Added a new feature to update rankings in a .bem event file from a .bsr series file based on Class Type. First use for the new tie-break requirements introduced for the 2020 BMX Australia National Series.

## Installation of Toolbox Version 3.22.7.

1. All instances of all versions of the BEM Toolbox must be **MUST BE UNINSTALLED BEFORE INSTALLING** this update.  
This includes limited distribution test versions

**DO NOT SKIP THIS STEP AS THE INTEGRITY OF THE UPGRADE WILL BE COMPROMISED AND UNPREDICTABLE OPERATION GUARANTEED.**

**If you do not understand this requirement, please e-mail [lyndon.downing@bigpond.com](mailto:lyndon.downing@bigpond.com) or perhaps ask a teenager for assistance.**

Screen shots are taken from Windows 7 Pro and may vary depending on the version of windows installed.

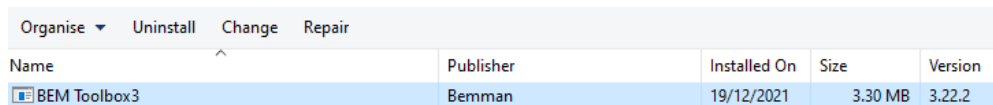
Click Start, Control Panel, Programs and Features (Add and Remove Programs in Windows XP)

Note that details will differ depending on the Toolbox version currently installed. I.e.

Toolbox Version	Name	Publisher
3.2.x	BEM Toolbox3	Bmx Event Manager
3.3.x and above	BEM Toolbox3	Bemman

[Uninstall or change a program](#)

To uninstall a program, select it from the list and then click Uninstall, Change or Repair.



The screenshot shows the 'Programs and Features' window in Windows. At the top, there are buttons for 'Organise', 'Uninstall', 'Change', and 'Repair'. Below these is a table of installed programs. The 'BEM Toolbox3' program is selected, and its details are shown in the table below.

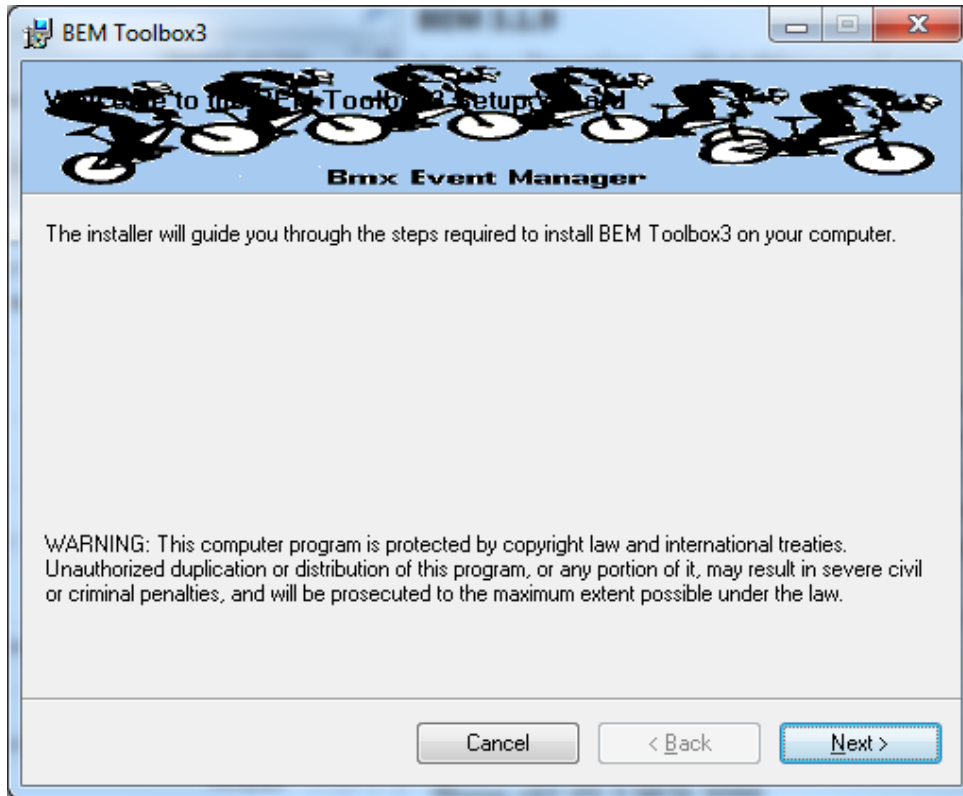
Name	Publisher	Installed On	Size	Version
BEM Toolbox3	Bemman	19/12/2021	3.30 MB	3.22.2

Select BEM Toolbox3, Right click then click on Uninstall.  
Answer Yes to any prompts required to complete the removal of the earlier version.

Repeat to remove any other instances of BEM Toolbox3 if more than one version was installed.

2. Download and save the **1a Toolbox Production 3-22-7.zip** file from <https://www.moto-sheets.com/index.php?p=manuals>
3. Unzip and save the **1a Toolbox Production 3-22-7.msi** file contained in the **1a Toolbox Production 3-22-7.zip** file.

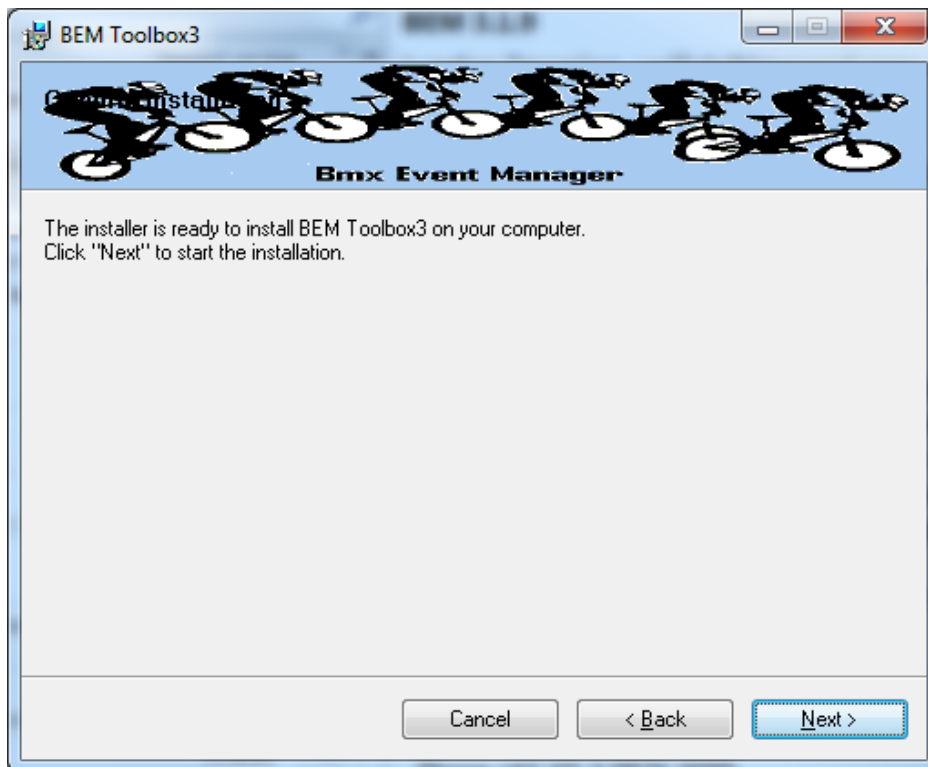
4. Double click on the Toolbox Project.msi file to start the installer.



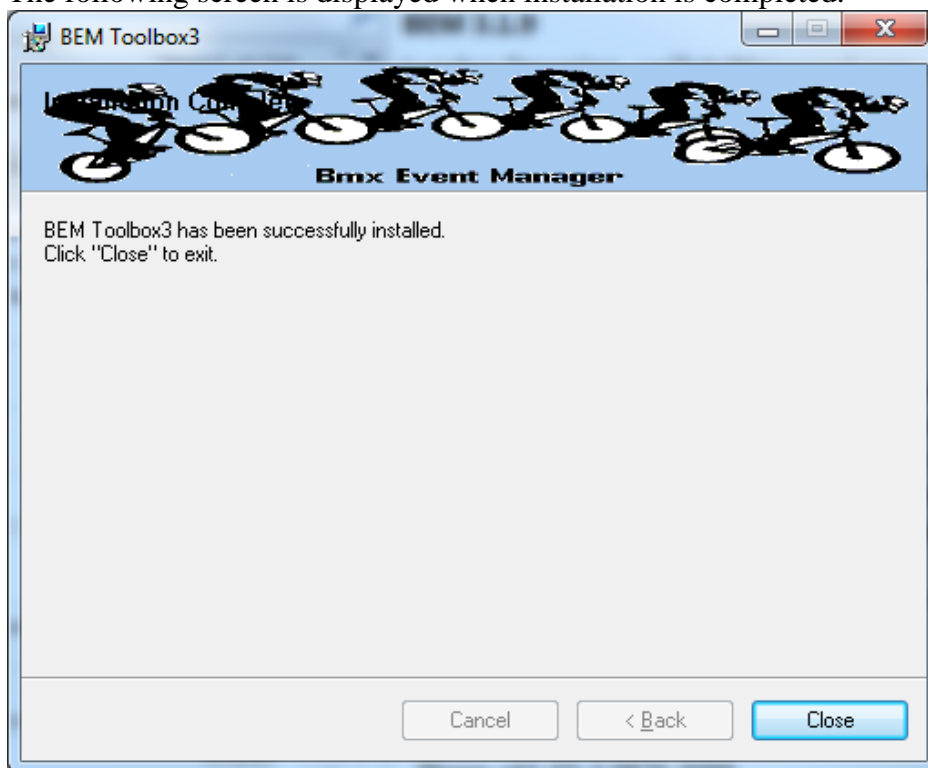
If you accept the copyright and unauthorised distribution conditions, click Next to continue the installation.



5. Click Next to start the installation.



6. The following screen is displayed when installation is completed.

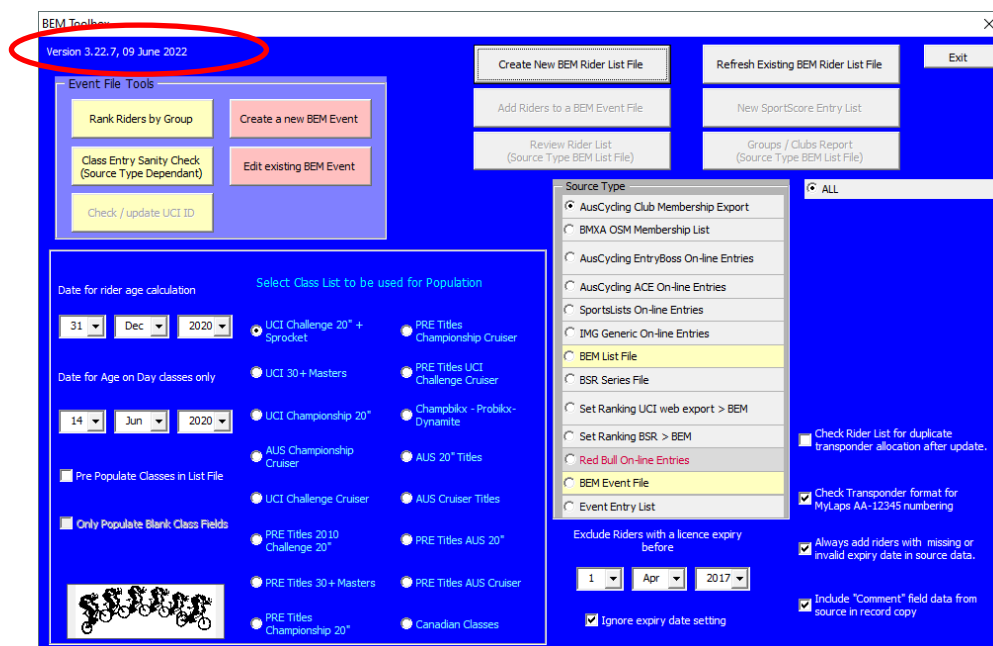


7. Notes:

- a. The installation is hardcoded into the folder structure:  
C:\BEM\Programs\Toolbox
- b. The installation adds the Toolbox to the BMX Event Manager group in the Programs Menu and provides a shortcut on the Desktop



8. When prompted, select the language and appropriate Association and when the BEM Toolbox main menu is displayed, verify that the details are shown as **Version 3.22.7, 09 June 2022**.



## Environment Details

The Toolbox3 program has the program files packaged with a third party compiler into a Microsoft Installer file. Note that Microsoft Excel is still required on the computer to be able to run the program.

Although the program is packaged into a MSI file, it is not compiled nor does it require an Activation Code.

The recommended PC environment is:

**Operating system** Windows XP, Vista, Windows7 or Windows 8 (full version, not the Tablet specific Windows 8 RT), Windows 10.

**Office 2010 (recommended), Office 2003 or Office 2007.**

The Toolbox 3.8.18 and above allows UCI Rankings to be updated in a BEM event file from an Excel UCI Rankings export from the UCI Website.

For users running Office 2007 and 2003, if not already installed you will need to install a Microsoft compatibility pack to be able to process the UCI Rankings Excel export file as the file format used by UCI contains features introduced in Office 2010. See <https://www.microsoft.com/en-US/download/details.aspx?id=3> for details.

Note that the BEM Toolbox is not compatible with Office 2013 and later (or more correctly), changes introduced by Microsoft in Office 2013 are not backwards compatible with thousands of projects that run quite happily on Office 2010, 2007 and 2003.

Critical to the reliable operation of the Toolbox program is to have all Microsoft Office updates, security patches and service packs installed. **If you do not have Excel versions at least matching the following, there is a good chance that your version of Excel is not up to date and may result in unpredictable operation.**

Version	Build	Comment
11.0	8404	Excel 2003, Service Pack 3+
12.0	6762	Excel 2007, Service Pack 3+
14.0	7268	Excel 2010 (32 or 64 bit Office installation)

End of Document